

DESCRIPTION

AMC MODEL SWN-1170-4DR/DT-AKG-DEC-SP IS A SINGLE POLE FOUR THROW, REFLECTIVE OR REFLECTIVE/ABSORPTIVE SWITCH MODULE WITH VERY HIGH ISOLATION, LOW LOSS, HIGH SPEED AND WITH INTEGRAL TTL DRIVER, DESIGNED FOR BROAD BAND OPERATIONS.

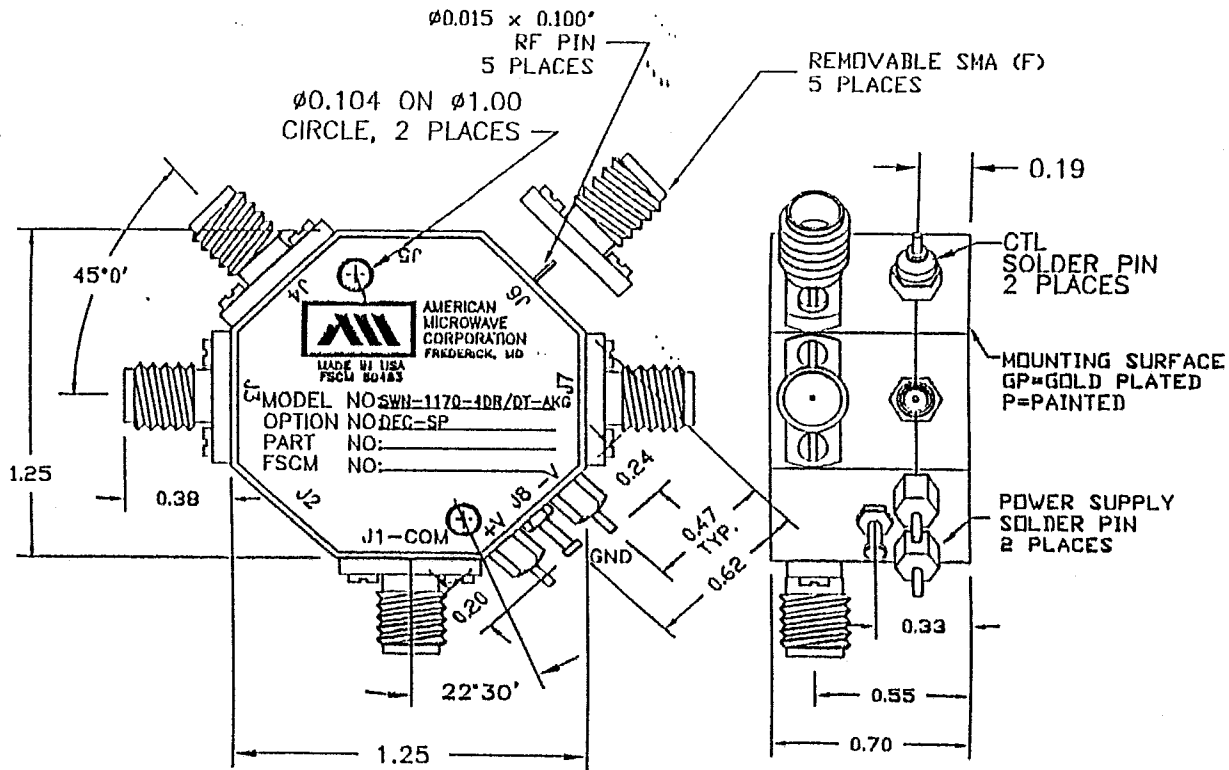
REV. NO.		DESCRIPTION	DATE	APPROVED
-		ORIGINAL RELEASE	12/20/99	

SPECIFICATIONS:

- FREQUENCY:** 0.5 GHz TO 18 GHz
- INSERTION LOSS:** REFLECTIVE: 4.0dB
ABSORPTIVE: 4.5dB
- ISOLATION:** 0.5 GHz TO 6 GHz: 110dB
6 GHz TO 18 GHz: 100dB
- VSWR:** REFLECTIVE IN/OUT: 2.0:1
ABSORPTIVE IN/OUT: 2.0:1
ABSORPTIVE OUT/OFF: 2.0:1
- SPEED:** RISE: 10ns TYPICAL, 15ns MAX.
FALL: 10ns TYPICAL, 15ns MAX.
DELAY ON: 75ns TYPICAL, 100ns MAX.
DELAY OFF: 75ns TYPICAL, 100ns MAX.
- POWER INPUT:** (CW)+20dBm (STANDARD), +10 dBm (HIGH SPEED)
- SURVIVAL POWER:** 1 WATT CW, 10 WATTS PEAK 1 usso
- CONTROL:** TTL LOGIC "0"=ON "1"=OFF
- POWER SUPPLY:** +5V @ 200 mA MAX.
-5V @ 75mA MAX.(REFLECTIVE)
100mA MAX.(ABSORPTIVE/NON-REFLECTIVE)
- SIZE:** 1.25" (L) x 1.25" (W) x 0.70" (H)
- WEIGHT:** 1.5 oz.

OPTIONS:

- INDEPENDENT CONTROL WITH SOLDER PIN STANDARD
DEC-SP 2 BIT DECODER WITH SOLDER PIN
- 10M1B 10 MHz TO 18 GHz (INSERTION LOSS INCREASES BY 1.5db AT 10 MHz AND 0.5db AT 18 GHz)
- 100M1B 100 MHz TO 18 GHz (INSERTION LOSS INCREASES BY 1.5db AT 100 MHz AND 0.5db AT 18 GHz)
- 11B 1 GHz TO 18 GHz (NO CHANGE IN INSERTION LOSS)
- 21B 2 GHz TO 18 GHz (NO CHANGE IN INSERTION LOSS)
- 412 4 GHz TO 12.4 GHz (NO CHANGE IN INSERTION LOSS)
- 61B 6 GHz TO 18 GHz (NO CHANGE IN INSERTION LOSS)
- 121B 12 GHz TO 18 GHz (NO CHANGE IN INSERTION LOSS)
- 100M20 100 MHz TO 20 GHz (INSERTION LOSS INCREASES BY 1.5db AT 100 MHz AND 1.0db AT 20 GHz)
- 220 2 GHz TO 20 GHz (INSERTION LOSS INCREASES BY 1.0db AT 20 GHz)
- 1020 10 GHz TO 20 GHz (INSERTION LOSS INCREASES BY 1.0db AT 20 GHz)
- B01 -12V POWER SUPPLIES
- B02 -15V POWER SUPPLIES
- B03 REVERSE LOGIC "1"=ON "0"=OFF
- B04 DRIVERLESS, CURRENT CONTROLLED
- B05 HIGH SPEED, TURNON/TURNOFF 20 nsec MAXIMUM WHEN APPLICABLE OR OPTION HS
- B06 HIGH POWER - SPECIFY CW POWER, PEAK POWER, PULSE WIDTH, DUTY CYCLE, RF FREQUENCY AND BANDWIDTH
- B07 CUSTOM DESIGNED PRODUCT- SPECIFY INITIALS OF CUSTOMER
- B08 LOW VIDEO TRANSIENTS - SPECIFY VIDEO BANDWIDTH
- B09 LOW INSERTION LOSS VERSION
- B10 HIGHER ISOLATION VERSION
- B11 0.40" THICK VERSION
- B12 0.88" THICK VERSION



E6	E7	RF ON
L	L	J3
H	L	J4
L	H	J6
H	H	J7

NOTE:
DR=WITH DRIVER, REFLECTIVE
DT=WITH DRIVER, NON-REFLECTIVE/ABSORPTIVE

ENVIRONMENTAL RATINGS:

- TEMPERATURE:** -55°C TO +85°C (OPERATING)
-65°C TO +125°C (STORAGE)
- HUMIDITY:** MIL-STD-202F, METHOD 103B COND. B
- SHOCK:** MIL-STD-202F, METHOD 213B COND. B
- VIBRATION:** MIL-STD-202F, METHOD 204D COND. B
- ALTITUDE:** MIL-STD-202F, METHOD 105C COND. B
- TEMPERATURE CYCLE:** MIL-STD-202F, METHOD 107D COND. A

ALL DIMENSIONS ARE IN INCHES

TOLERANCES:
X.XX ±0.020
X.XXX ±0.010

NOTE: THE ABOVE SPECIFICATIONS ARE SUBJECT TO CHANGE OR REVISION

CONTRACT NO.		AMERICAN MICROWAVE CORPORATION FREDERICK, MARYLAND	
APPROVALS	DATE	TITLE OUTLINE DRAWING	
DRAWN WPP, R.R.d	1/20/99	SWN-1170-4DR/DT-AKG-DEC-SP REFLECTIVE OR NON-REFLECTIVE/ABSORPTIVE RADIAL SOLID STATE SWITCH	
CHECKED W.P.	7/29/99	SIZE A	FSCM NO. 60483
ISSUED FA	7/29/99	DWG NO. 100-4789-2	REV. -
SCALE N/S		SHEET 1 of 2	